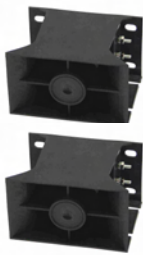


BACK UP ALARMS



PART.NO.	SOUND CYCLE	FREQUENCY	CURRENT DRAW @ 80V	OPERATING VOLTAGE	DIMENSIONS
160B-97	60 - 65 Pm	1250 - 1300Hz	0.2 Amps	12 - 80 VDC	102mm (L) 41mm (W) 70mm (H)
160B-102	60 - 65 Pm	1250 - 1300Hz	0.25 Amps	12 - 80 VDC	102mm (L) 41mm (W) 70mm (H)
160B-107	60 - 65 Pm	1250 - 1300Hz	0.4 Amps	12 - 80 VDC	102mm (L) 41mm (W) 70mm (H)
160B-112	60 - 65 Pm	1250 - 1300Hz	0.5 Amps	12 - 24 VDC	102mm (L) 41mm (W) 70mm (H)



PART.NO.	SOUND CYCLE	FREQUENCY	CURRENT DRAW @ 12V	OPERATING VOLTAGE	DIMENSIONS
140B-87-112	60 - 65 Pm	110 - 1400Hz	230 - 800mA	12 - 24 VDC	96mm (L) 125mm (W) 77mm (H)
140B-112FA	Continuous	110 - 1400Hz	800mA	12 - 24 VDC	96mm (L) 125mm (W) 77mm (H)

- 160B Plastic Housing: Nylon plus 30% fiber.
- 140B Plastic Housing: Nylon plus 33% fiber.
- Earthing strap for easy installation.
- Splash Proof.
- Operating Temperature -40 Deg.C to 80 Deg.C.



TECHNICAL DRAWING

